

Celebrating Community Generosity

2019 Annual Report





TABLE OF CONTENTS

2019 By the Numbers	1
- How to give	
Cycling Without Age	2
Waushara County Food Pantry	4
Community Grants	6
Scholarships	10
New Funds in 2019	12
- How to start a fund	
Heinz Living Legacy Circle	12
Types of Funds	13
Funds at CFCWI	13
Financials	16
Foundation Leadership	17

37 YEARS
connecting donors
to causes they care
about most!

CELEBRATING COMMUNITY GENEROSITY



Dear CFCWI donors, fund representatives and friends:

Celebrating Community Generosity is the perfect theme for this year's Community Foundation annual report; generosity is at the very core of what we do. When you work with a community of dedicated people, organizations, and nonprofits, great things are bound to happen.

We are surrounded by generosity every day and the Foundation is honored to be part of remarkable connections throughout Portage and Waushara Counties. Looking back on 2019, our donors have enabled us to award over \$1.8 million in grants, scholarships and program services.

Who do you love? What do you love?

Philanthropy is a collective investment. Whether you are passionate about arts & culture, wellness, helping people, education, or the environment, Central Wisconsin is fortunate to have effective organizations and community members committed to creative solutions and new ideas.

If you love where you live and want to make an everlasting impact, we invite you to join us. We strive to make philanthropy easy by helping you invest in the future of the people and places you love.

Thank you for joining us as we work to strengthen this place we call home. As you read through this report, we hope you are inspired to join us in celebrating our generous community.

Jim Robinson
Board President

Erin Andrews
Executive Director

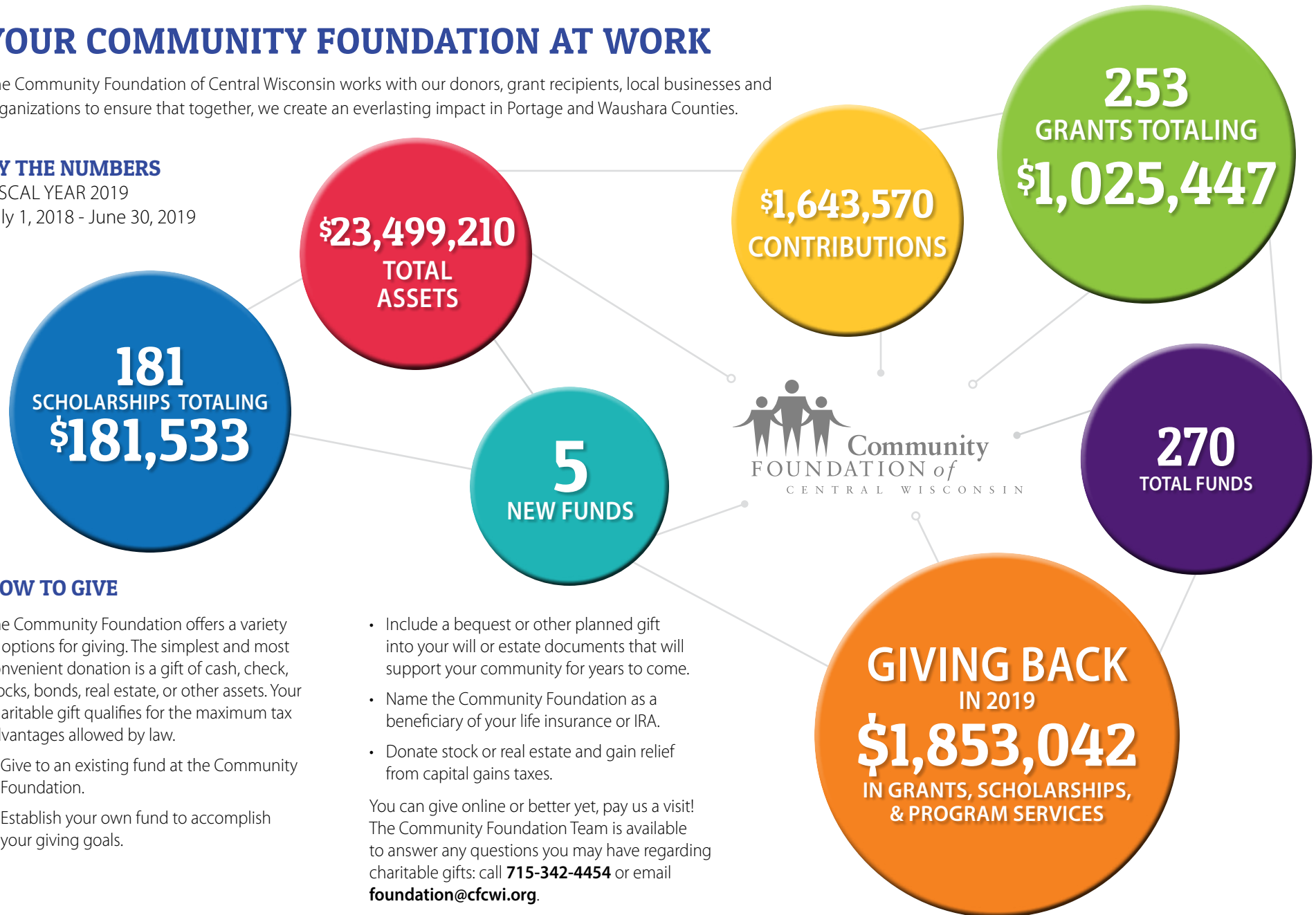
YOUR COMMUNITY FOUNDATION AT WORK

The Community Foundation of Central Wisconsin works with our donors, grant recipients, local businesses and organizations to ensure that together, we create an everlasting impact in Portage and Waushara Counties.

BY THE NUMBERS

FISCAL YEAR 2019

July 1, 2018 - June 30, 2019



HOW TO GIVE

The Community Foundation offers a variety of options for giving. The simplest and most convenient donation is a gift of cash, check, stocks, bonds, real estate, or other assets. Your charitable gift qualifies for the maximum tax advantages allowed by law.

- Give to an existing fund at the Community Foundation.
- Establish your own fund to accomplish your giving goals.

- Include a bequest or other planned gift into your will or estate documents that will support your community for years to come.
- Name the Community Foundation as a beneficiary of your life insurance or IRA.
- Donate stock or real estate and gain relief from capital gains taxes.

You can give online or better yet, pay us a visit! The Community Foundation Team is available to answer any questions you may have regarding charitable gifts: call **715-342-4454** or email foundation@cfcwi.org.



*Jim Mendyke and his mother Joan
piloted by Founder Tori Jennings*

I was able to see the benefits of this program firsthand when I went on a ride with my mother. She was reluctant at first, but once the wind hit her face, her spirit changed and she expressed pure joy. With a bright smile, she started reminiscing and sharing stories from her childhood and a fun story from when she and my dad were dating. It's a memory I will always cherish.

- Jim Mendyke



THE RIGHT TO FEEL WIND IN YOUR HAIR

A group of community volunteers in Portage County is giving seniors the chance to feel the wind in their hair again.

Individuals with limited mobility do not often have the opportunity to get out and experience the natural beauty of our community. Thanks to the work of Tori Jennings and the volunteers of Cycling Without Age Portage County, this population is experiencing the outdoors in a whole new way.

Cycling Without Age was founded in Copenhagen, Denmark in 2012 to provide older adults and adults with differing abilities free bicycle rides in a trishaw. A trishaw is a rickshaw/tricycle hybrid, pedaled by a volunteer pilot trained in safety, storytelling and listening. Tori took her first trishaw ride in 2017 in Wisconsin; she knew instantly that she needed to bring Cycling Without Age to Portage County.

In order to raise awareness and financial support for the program, Tori knew local partnerships would be critical. The partnership with the Community Foundation of Central Wisconsin provided a trusted source for donors to know their

gifts would make a lasting impact. The support and direction Tori received through the partnership with the Foundation helped Cycling Without Age exceed their fundraising goals and launch their own nonprofit 501(c)3 organization in 2019.

Cycling Without Age is an asset to our community and an example of what can be accomplished through strategic partnerships with donors, volunteers and service organizations. The Community Foundation is proud to partner with generous community members to improve the quality of life in Central Wisconsin for all residents.

From the start, the Foundation believed in our mission and purpose. If we wouldn't have had the Foundation's support and guidance, I don't think we would be as successful as we are today. We now have four trishaws and a trailer that allows us to transport three trishaws to various locations enabling us to serve the entire county.

We are so grateful for the support we have received from the Foundation, as well as the Aging & Disability Resource Center of Portage County, Copperleaf Senior Living, the Rotary of Greater Portage County, Portage County Can and the entire community.

- Tori Jennings





**SERVING APPROX.
800 FAMILIES
EVERY MONTH**

ADDRESSING HUNGER IN WAUSHARA COUNTY

Food insecurity is a critical issue in Waushara County. Although the county has a lower unemployment rate than the national average, the child poverty rate is higher than the state rate. Working families continue to struggle to access three healthy meals a day; food pantries are a necessity to many county residents.

The Waushara County Food Pantry is a unique collaboration of volunteers, businesses, and organizations, both locally and nationally, who are committed to providing nutritional food for the residents of Waushara County. The Pantry serves approximately 800 families every month and is sourced from locations around the state.

Volunteers at the food pantry work tirelessly to ensure individuals and families who need a helping hand receive the resources necessary to live their best life. But preserving and providing fresh food to families is a challenge. The solution is rooted in determination, volunteers and funding partnerships.

Grants from the Community Foundation of Central Wisconsin helped the Waushara County Food pantry purchase a 27-foot refrigerated truck, allowing volunteer drivers to secure fresh produce from sources up to three hours away.

"We are so grateful to the funding we received from the Foundation. Being able to purchase the refrigerated truck was instrumental to the growth and survival of our food pantry. Prior to that, we could only travel up to 45 minutes away because the food would spoil.

The funding we received to purchase the truck has really changed our food pantry's life forever."

Marty Lee

Executive Director



At the Waushara County Food Pantry, it is more than just putting food on the table. It is about Quality of Life.



The WAUSHARA FAMILY OF FUNDS represents over \$2 million in assets at the Community Foundation.

FUND	2019 Balance
Hartford Waushara Co. Mission Fund	\$861,155
Wautoma Scholarships	\$301,490
Wild Rose Scholarships	\$1,067,521
Total	\$2,230,166

WAUSHARA COUNTY FUNDS

-Hartford Waushara County Mission Fund

-Wautoma Scholarship Funds

Ann G. Haley Scholarship Fund
Edna B. Collins Scholarship Fund
Inwald & Anna Songe Scholarship Fund
Jeffrey Badura Memorial Scholarship Fund
Vernon Grosenick Scholarship Fund

-Wild Rose Scholarship Funds

Elizabeth C. Davies Scholarship Fund
Jerry Apps Scholarship Fund
John R. Jones Scholarship Fund
Lois & Margaret Walters Scholarship
Martha Jones Scholarship Fund
Mary Humphrey Scholarship Fund
Murty Trust Scholarship Fund

HOW TO APPLY FOR A GRANT

We encourage nonprofit or established community organizations in Portage and Waushara County to apply for a grant to support their activities. We seek grants that align with our Mission Areas that focus on helping people, enhancing education, enriching arts and culture, contributing to wellness and improving the environment.

Grant applications, guidelines and deadlines are available on our website at cfcwi.org. For more information, please contact:

Marlee Bokhoven
Grants & Scholarships Coordinator
marlee@cfcwi.org
715-342-4454



Portage County Cultural Festival



Opera For The Young, Inc.



Healthy Smiles Portage County



CFCWI presents a grant check to Melvin Dow with Interfaith Food Pantry



Volunteers pack bags for Waushara Prevention Council's Vision 2020 Backpack Nutrition Program

2019 COMMUNITY GRANTS

Funding for our 2019 Community Grants was provided by the Community Foundation Mission Funds, the Hartford Waushara County Mission Fund, the Community Fund, the Arthur E. Heinz Fund, the Skyward Fund, the Bill & Harriet Fulton Memorial Fund.

Big Brothers Big Sisters of Central Wisconsin:

To provide 1-to-1 mentoring for disadvantaged children in Portage County through Community and Site Based Mentoring programs.

Boys & Girls Club of Portage County:

To support Club sites in the communities of Junction City and Rosholt for at-risk youth to have a safe place to go after school and during summer break.

CAP Services, Inc.

- **Family Crisis Center:** To help Portage County victims of domestic and sexual abuse set goals in the areas of safety, housing, employment, education and family well-being.
- **Skills Enhancement Program:** To provide financial assistance to low-income participants to improve skills necessary for higher-paying jobs and benefits.
- **Volunteer Income Tax Assistance (VITA) in Portage County:** To recruit, train, and supervise volunteers to prepare tax returns for low-income residents.
- **Mental Health Navigation:** To provide support needed to improve the mental health of Portage County residents.

Central Rivers Farmshed: To improve community access to locally produced foods and agricultural goods in the Stevens Point area through the 2019 Local Food Fair.

Central Wisconsin Children's Museum

- **EveryFund:** To provide educational access to underprivileged and special needs children and their families through interactive exhibits.
- **Create-It! Art Room:** To support the exploration of artistic expression for early childhood and K-5 kids in the community through the museum's Arts and Culture programs.

Central Wisconsin Symphony Orchestra:

To support the Dorothy Vetter Educational Concerts for Fourth Graders, an interactive concert experience meant to stimulate interest in music performance among all children in our community.

Children's Service Society of Wisconsin:

To empower parents with skills they need to achieve stability and provide a safe, stable and nurturing home environment.

Community Friends: To better integrate low-income Portage County adults with disabilities into community life through a variety of monthly community events along with free handicapped-accessible transportation.

CREATE Portage County: To support arts, culture, and creativity in Portage County through the IDEA Center to create a vital community for new and current residents.

Creative Caring Hearts Layettes for Newborns:

To provide supplies for quality, handmade infant layettes for families in need at Ascension St. Michael's Hospital.

Evergreen Community Initiatives:

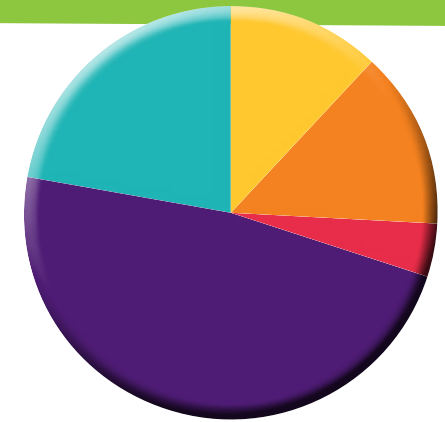
To provide assistance to those in need by providing temporary overnight housing accommodations during the coldest months of the year, along with assistance in connecting individuals in need with other community and governmental agencies.

Friends of Standing Rocks: To support the Behnke Olson Outdoor Recreation Center at Standing Rocks Park as a central location for shelter, heat, water and restrooms for all recreational activities at Standing Rocks Park.

Interfaith Food Pantry: To provide a wide variety of healthy, nutritious foods for Portage County families, adults and seniors in need.

Junior Achievement of Wisconsin:

To support programs that empower students to be successful in reaching their goals which will attribute to the growth and stability of the entire community.



MISSION AREAS 2019 GRANTS

● Arts & Culture \$29,150 (12%)	● Helping People \$121,980 (48%)
● Education \$35,520 (14%)	● Wellness \$56,000 (22%)
● Environment \$9,100 (4%)	

Meals on Wheels: To support the cost of meals served to older and disabled adults that enables them to maintain independent living with safety and dignity.

Midwest Renewable Energy Association:

To provide communities across Portage County free technical assistance and advice to increase solar power generation.

National Inventors Hall of Fame:

To provide scholarships for economically disadvantaged students participating in Camp Invention programs in the Stevens Point School District, focusing on science, technology, engineering and math activities.

Opera For The Young, Inc.: To ignite enthusiasm for opera in elementary students, parents, and teachers in Stevens Point.



Woodlands Church -Backpacks for Hope



Point Dance Ensemble

Operation Bootstrap: To assist low-income households in Portage County with basic necessities like shelter, heat, electricity, water, gas or bus fare, food, household supplies and emergency medications so they can live healthy, stable, fulfilling lives.

Point Dance Ensemble: To support "Free to Be Me," a collaborative performance with VSA Wisconsin and Suzuki Institute to provide dancers with disabilities an opportunity to be part of an inclusive dance community.

Portage County Cultural Festival: To educate the community about ethnic diversity at a one-day event at Stevens Point Senior High School, featuring food, music, folk dances, native crafts and children's games from around the world.

Portage County Health and Human Services Department:

- **Safe Environment for the Early Years Program:** To sustain and expand two safety programs, *Babe-B-Safe* and *C.A.R.S.*, to allow families to implement recommended safety measures where their children live and play.
- **Healthy Smiles:** To provide dental sealants and fluoride varnish for 2nd and 6th grade students in Portage County.

Portage County Literacy Council, Inc.:

To provide adults with low literacy one-to-one tutoring and instruction with trained, volunteer tutors.

Reading First! of Portage County:

To promote family reading and conduct events that celebrate books and reading.

Riverfront Jazz Festival: To provide high quality jazz music and a diverse cuisine along the Wisconsin River.

St. Vincent de Paul Community Center:

To provide a healthy selection of food to those who need it most to help build a stronger and healthier community.

Stevens Point Area YMCA

- **Farm to School Program:** To decrease childhood obesity by promoting healthy eating habits for students and increasing access to local foods in schools.
- **Hmong Healthy Connections:** To help Hmong families understand the benefits of healthy eating and physical activity by engaging the entire family in supporting healthier environments.

Stevens Point Child Safety Center: To provide education to families and help create a safe environment to keep all kids safe through bike helmet and car seat safety.

Stevens Point Sculpture Park: To support the development of a new community sculpture, *Impressions of Point 2*.

Twelve Apostles Musky Club: To stock fish in the Wisconsin River and its flowages in Portage County.

VITA/TCE Income Tax Preparation:

To support free tax preparation and filing for low income, elderly and disabled members of the community.

VSA Wisconsin: To support early childhood artists in residencies for children with disabilities in the Stevens Point School District.

Welcomed Inc.: To support foster children and their families within a caring community through stable, well-supported foster families.

Woodlands Church

- **Backpacks for Hope:** To help families by caring for the health and wellness of economically disadvantaged school-age children in our community.
- **Spring Into Action:** To provide supplies to conduct facility improvements for the Stevens Point Public School District.



Boys & Girls Club in Junction City



Central Rivers Farmshed - 2019 Local Food Fair

WAUSHARA COUNTY GRANTS

CAP Services Waushara County

- **Skills Enhancement Program:** To provide financial assistance for low-income participants to improve skills necessary for higher-paying jobs and benefits.
- **Volunteer Income Tax Assistance (VITA) in Waushara County:** To recruit, train, and supervise volunteers to prepare tax returns for low-income residents.

Saxeville Community Church: To supply weekend food for children who receive free and reduced meals through the Wild Rose School District.

Waushara County Food Pantry: To provide a wide variety of healthy, nutritious foods for Waushara County residents in need and assist in the purchase of a lift gate for a refrigerated food truck.

Waushara Prevention Council: To support the Vision 2020 Backpack Nutrition Program, by providing nutritious food for economically disadvantaged elementary students in Waushara County to take home on weekends.

Lutheran Counseling and Family Services of Wisconsin: To provide affordable assistance to those in a crisis caused by an addiction or mental health condition which is adversely affecting daily lives, family dynamics, or productivity.

Central Wisconsin Symphony Orchestra: To support the Dorothy Vetter Educational Concerts for Fourth Graders, an interactive concert experience to stimulate interest in music performance among all children in our community.



YMCA Hmong Healthy Connections



CREATE Portage County IDEA Center



Portage County Literacy Council
tutor match Naomi and Dora



Madelyn Schneider

2019 recipient of the Mike Olson
Cross Country Scholarship pictured
with Fund Representative Mike Olson

2020 ONLINE SCHOLARSHIP APPLICATIONS

Community Foundation scholarships are offered annually for high school students going to college, current college students, as well as non-traditional college students. Scholarship awards vary in size from \$100 to multi-year awards of up to \$5,000.

The scholarship application process is online to make it easy and efficient for applicants.

Applications available online:

December 1st

Application deadline:

February 15th

Applicants notified:

April 2020

Please visit our website at cfcwi.org to review eligibility and special requirements. For scholarship applications for the School Districts of Rosholt, Stevens Point, Wautoma and Wild Rose, contact the school counseling office.

SCHOLARSHIPS

The Community Foundation was established in 1982 to support education and the tradition continues today. In 2019, the Foundation and its partners awarded **181 scholarships** to deserving students.

Alton & Barbara McDonald Scholarship

Jacob Feltz

Angie Sheldon Memorial Scholarship Fund

Nathaniel Disher
Cami Newby
Angela Rogers
Emma Wallace

Barlow Enterprises Scholarship

Amanda Cisewski

C.O.L.L.E.G.E. Scholarship Fund

AnnaMarie Hintz
Mackenzie Hintz
Martha Yenter
Talie Zinda

Cheri Smith Scholarship Fund

Annie Schirmer

Community First Bank Scholarship Fund

Jacob Feltz
Kaila Fletcher
MacKenzie Kerchevski
Kayliah Meronk
Ashley Studzinski
Autumn Trzebiatowski

Cook Family Scholarship Fund

Koppany Bodor

Dan Zurawski Memorial Scholarship Fund

Isaiah Cherek
Adam Wysocki

Debbie Callahan Arts Scholarship Fund

Skyler Wolff

Delta Dental Service Scholarship

Mackenzie Cashin
Jacob Feltz
Alexandria Hutkowski
Jared Kort
Seth Shulfer

Dirk Sorenson - Dave Amdahl

Wrestling Scholarship

Jacob Feltz

Don Hamerski Memorial Scholarship Fund

Nathan Helms

Donn Behnke Scholarship Fund

Alex Strojny

Elmer Fournier Memorial Scholarship Fund

Olivia Helminiak

Fat Boy Golf Scholarship Fund

Trevor Frane
Madeline Kunze
Vincent Omernik
Evan Thomas

Fern M. Johnson Nursing Scholarship Fund

Allison Krusa

Friends of 90FM Scholarship

Keegan West
Theresa Yonash

George Roman Baseball Scholarship Fund

Mason King

Heidi Evenson Memorial Scholarship Fund

Ashley Powell

Iber Health Education Scholarship Fund

Katie Hoerter
Allison Krusa
Jessie Lietzke

Irene E. Kubisiak Scholarship Fund

Benjamin Villnow

Jill & John Norton Scholarship Fund

Brynn Beversdorf

Jim Kocha Memorial Scholarship Fund

AnnaMarie Hintz

Joey Trzebiatowski Memorial

Scholarship Fund

Taylor Ciesielski
Olivia Molle
Annie Schirmer

John Wandrey Memorial Scholarship Fund

Jared Kort

Judge Robert Jenkins Memorial Fund

Amanda Klasinski

Klismith Family Fund

Olivia Molle

Laura Davies Memorial Scholarship Fund

AnnaMarie Hintz
Mackenzie Hintz

MADA Custom Apparel Scholarship Fund

Renee Hinchcliffe
Leo Knapp

Mark Acaley Memorial Scholarship Fund

Mark Borland

Mary Thurmaier Foreign Language

Scholarship Fund

Rachel Lummis

Mike Olson Cross Country Scholarship Fund

Madelyn Schneider

Norman & Margaret Myhra

Scholarship Fund

Koppany Bodor
Renee Hinchcliffe

North New Hope Lutheran Church Fund

Elizabeth Gburek
Joseph Gburek

Peter C. Zimmerman Memorial

Scholarship Fund

Jessica Lange
Havilah Vang

Peter Friedrich Memorial Scholarship Fund

Grace Engebretson
Samuel Jordan

Plover Whiting Youth Athletics Scholarship

Rachel Placeway

Point Bock Run Scholarship

Adam Rzentkowski

Portage County Wildlife Fund

Emmaline Belling
Dakota Bock
Amber Cady
Keenan Foley
Andrew Hanneman

Russell Phillips Scholarship Fund

Adam Rider

Ryan Wanta Memorial Scholarship Fund

Debbie Vue

Scott Schultz Memorial Scholarship Fund

Madeline Hinaus
Paige Proctor

SPASH Girls Soccer Club Scholarship Fund

Sierra Hefferan

Stevens Point Area Retired Teachers Association Scholarship Fund

Alexandria Hutkowski
Jessica Lange

Stevens Point Rotary Club Fund

Cassidy Ferguson
Madeline Hinaus
Noah Kollock
Abigail Rosenthal

Susan M. Zywicki Memorial Scholarship Fund

Tarren Lewis

Tim Turner Scholarship Fund

Amara Benn

William Cherek Scholarship Fund

Isaiah Cherek
Carissa Delikowski

Win & Nora Jensen Scholarship Fund

Anna Hansen

ROSHOLT EDUCATION FOUNDATION SCHOLARSHIP AWARDS

Barbara J. Gagas Memorial Scholarship

Kayliah Meronk

Bunczak Family Scholarship

Anna Lorbiecki

Charles A. Anderson Memorial Scholarship

Lauren Filtz Lewandowski

Friends of Education Scholarship

Taylor Krogwold
Kaitlyn Stull

Henry Flees - Scott Eiden Memorial Scholarship

Lilliann Walder

Ken & Helen Scheidt Memorial Scholarship

Natasha Ockwig

Malcolm & Margaret Rosholt Scholarship

Mackenzie Stalter

Marie Colrud Gunther Memorial Scholarship

Kaila Fletcher

Rosholt Lions & Sandy Becker Memorial Scholarship

Carissa Delikowski

Ruth Nelson Memorial Scholarship

Adam Rzentkowski

Sammy Jo Kurdydyk Memorial Scholarship

Bryan Cook

Vernon & Freida Rosholt Memorial Scholarship

Kaila Fletcher



STEVENS POINT AREA EDUCATION ASSOCIATION SCHOLARSHIP AWARDS

Family & Consumer Education/TLS Scholarship

Felicia Singer

Greg Chelcun Memorial Scholarship

Koppany Bodor

Jon Vollendorf Girls Basketball Scholarship

Rachel Lummis

Laura Lee & Brian K. Johnson Fine Arts Scholarship

Rayna Bushey
Allison Kleman
Taylor Konczal
Kenzie Swinford
Zoshia Zalewski

LeRoy & Phyllis Heiser Basketball Scholarship

Rachel Lummis

Music Department Scholarship

Allison Kleman

Richard Lee Biga II Memorial Scholarship

Caden Hyer

Sadie Uihlein Scholarship

Kirstin Wroblewski

Schwartz Family Scholarship

Hope Nemeth

Science Department Scholarship

Taylor Roska
Elle Schraufnagel

Sheila Kokkeler Scholarship

Renee Hinchcliffe

Stevens Point Area Education Association Scholarship

Jacob Feltz	Kayla Lass
Anna Hansen	Blake Milkowski
Bailey Herzog	Hope Nemeth
Brooke Hiess	Nathan Roth
Kirsten Hill	Izabelle Rottier
Renee Hinchcliffe	Madelyn Schneider
AnnaMarie Hintz	Elle Schraufnagel
Mackenzie Hintz	Henry Sims
Mackenzie Kerchefska	Kenzie Swinford
Jillian Keup	Ella Swiston
Allison Kleman	Elizabeth Wentzel
Taylor Konczal	Talie Zinda
Jared Kort	

WAUTOMA SCHOLARSHIP AWARDS

Ann G. Haley Scholarship

Angela Kowalewski

Edna B. Collins Scholarship

Alexander Hendrickson

Inwald & Anna Songe Scholarship

Chloe Gulbranson
Cole Hinz
Jennifer Liu
Mackenzie Ralls

Jeffrey Badura Memorial Scholarship

Jennifer Liu

Vernon Grosenick Scholarship

Daniela Barcnas
Rebecca Bohn
Sky Sharp

WILD ROSE SCHOLARSHIP AWARDS

Elizabeth C. Davies Scholarship Fund

Thomas Friday
Johanna Van Epps

Jerry Apps Scholarship Fund

Kiley Larson

John R. Jones Scholarship Fund

Lily Jensen

Lois & Margaret Walters Scholarship Fund

Ashley Caswell

Martha Jones Scholarship Fund

Emilee Haag
Kiana Julian

Mary Humphrey Scholarship Fund

Thomas Friday
Mary Jenks
Kiana Julian
Amber Quimby
Johanna Van Epps

Murty Trust Scholarship Fund

Prince-Ashton Bellamy	Mary Jenks
Emma Brooks	Kiana Julian
Ashley Caswell	Caleigh Lippert
Thomas Friday	Amber Quimby
Allyson Haag	Johanna Van Epps
Emilee Haag	Anthony Wieland
Kristin Jenks	Nick Wilbert



Waushara County Animal Shelter



Rachel Placeway
recipient of the
Plover Whiting Youth
Athletics Scholarship



Friends of Emerson Park



Dennis Bonikowske



AJ Zdroik

NEW FUNDS IN 2019

The Community Foundation is proud to welcome the following funds that joined the Foundation between July 1, 2018- October 2019.

AJ Zdroik Steel-Toed Footprints Memorial Fund

To honor the memory of AJ Zdroik by providing grants to projects that recognize youth talent in the trades and support youth who have an interest in building and fixing things.

Dennis Bonikowske "Write-Right" Scholarship

To award an annual scholarship to a graduating senior from Stevens Point Area Senior High School with a special interest in English classes and writing.

Friends of Emerson Park

To raise funds to improve the neighborhood park on the former Emerson School site in Stevens Point.

Plover Whiting Youth Athletics Scholarship

To provide a scholarship to a Portage County resident with a history of participation in PWYA.

Waushara County Animal Shelter Fund

To raise funds to establish the only animal shelter in Waushara County.

START A NEW FUND

You can make a lasting difference in your community by starting a fund at the Community Foundation of Central Wisconsin. We offer personalized options to help you reach your charitable giving goals.

Our team of professionals will meet with you to identify the type of fund that will meet your charitable goals. You can open the fund with a one-time gift or grow it over time with as little as \$600 per year.

You can grow your fund with a wide variety of assets, including non-cash gifts like stock or annual IRA distributions. Your fund can be named as a beneficiary of your estate, your IRA or your retirement plan.

If you are interested in starting a new fund or help with charitable giving as part of your estate planning, please contact our office at foundation@cfcwi.org, or call 715-342-4454 to make an appointment.

HEINZ LIVING LEGACY CIRCLE

The Community Foundation of Central Wisconsin encourages people to leave a legacy gift to their community through their will or estate plan.

The Heinz Living Legacy Circle is composed of caring individuals and families who have made a planned gift to CFCWI.

The Community Foundation is proud to recognize the following Heinz Living Legacy Circle members for their thoughtful and generous planning to support their community well into the future:

Robert & Mary Berard

Jack & Cheryl Brooks

William B. Bruce III*

Paul & Debbie Callahan

Jim Canales

Nancy Croisant*

Tom & Kathy Davies

Harriet Fulton*

Helen Godfrey*

James Godfrey

Geraldine Hartford*

Arthur Heinz*

Jan & Kathy Hermann

John & Vicki Jenks

Joan Joerns*

Edie Kraus*

Irene Kubisiak*

Mary Ann Laszewski

Nancy Newell Moore

Margaret Myhra*

Terry & Karla Rothmann

Ruth Salzmann*

Bill Schierl & Sarena Melotte

Craig & Cheri Smith

Robert & Mary Taylor

Carl Wohlbier*



**YOUR GENEROSITY CREATES
AN IMPACT THAT WILL
BE HERE FOR GOOD**

*Legacy gifts realized

TYPES OF FUNDS

MISSION FUNDS are maintained by the Foundation to allow donors to support community efforts in special focus areas. These funds support our annual Community Grants.

- Arts & Culture
- Education
- Helping People
- Wellness
- Environment
- Community Fund

DONOR ADVISED FUNDS: For donors who are actively involved in granting to their favorite charitable organizations and programs.

SCHOLARSHIP FUNDS: For donors who want the opportunity to provide scholarships to students.

DESIGNATED FUNDS: For donors who identify specific charitable organizations or programs to receive annual support.

FIELD OF INTEREST FUNDS: For donors interested in funding a specific focus area through a competitive grant application process.

SPECIAL PROJECT/PASS-THROUGH FUNDS: Short-term funds that offer philanthropists the ability to fundraise for community projects.

AGENCY FUNDS: Endowments of local non-profits held at the Foundation for secure, long-term investments.

SEED-A-FUTURE FUNDS: For individuals who want build an endowed fund over time. Donors can grow this fund to endowed status in 10 years by contributing as little as \$600 a year.



The Women's Fund of Portage County is a Field of Interest Fund at the Community Foundation that was formed in 1997 through a collaborative partnership between Ascension St. Michael's Hospital Foundation, the Stevens Point Area YMCA Foundation, and CFCWI.

Their mission is to empower women philanthropists by supporting programs that help women and children in Portage County. In 2019, the Women's Fund granted \$57,922 to the following organizations and programs:

- Ascension St. Michael's Hospital Foundation - Breast Care Center
- Big Brothers Big Sisters of Central Wisconsin - Site Based Mentoring
- Boys & Girls Club of Portage County - Meal Program
- CAP Services, Inc. - Skills Enhancement
- Central Wisconsin Children's Museum - EveryFund!
- Central Wisconsin Symphony Orchestra - Vetter Educational Concerts
- Foster Hope, Inc. - Royal Family Kids Camp
- Girl Scouts of the Northwestern Great Lakes - Outreach Programs & Camp Financial Aid
- Junior Achievement of Wisconsin - Empowering Our Local Youth
- Meals on Wheels of Stevens Point - Meals for Senior Women
- Operation Bootstrap - Energy Assistance
- Operation Bootstrap - Housing Assistance
- Operation Bootstrap - Transportation Assistance
- ODC, Inc. - Health Matters
- Portage County Health & Human Services - Cribs for Kids
- Portage County Health & Human Services - Healthy Smiles
- Portage County Literacy Council - One-on-One Tutoring
- St. Paul's United Methodist - Project Fresh Clothes
- Stevens Point Child Safety Center - Adopt a Seat
- United Way of Portage County - Diaper Drive
- University Child Learning & Care Center - Child Care Scholarships
- UWSP Women's & Gender Studies - Scholarship for Student Moms
- YMCA - Arts & Crafts at Camp Glacier Hollow

FUNDS AT THE COMMUNITY FOUNDATION OF CENTRAL WISCONSIN

MISSION FUNDS

Arts & Culture Mission Fund of Portage County
Community Mission Fund of Portage County
Education Mission Fund of Portage County
Environment Mission Fund of Portage County
Helping People Mission Fund of Portage County
Wellness Mission Fund of Portage County
Hartford Waushara County Mission Fund

AGENCY FUNDS

Big Brothers Big Sisters of Central Wisconsin Inc. Fund
Goodwill Industries of North Central Wisconsin Fund
Portage County Public Library Board of Trustees, Inc.
Portage County Public Library Foundation, Inc.
St. Paul Evangelical Lutheran Church Fund
Stevens Point Area Convention & Visitors Bureau Fund
Wesley Foundation Fund

DESIGNATED FUNDS

Aldo Leopold Audubon Society Fund
Arthur E. Heinz Charitable Fund

Bill & Harriet Fulton Memorial Fund
Boston School Forest Fund
Camp Hope Endowment Fund
CAP Services Endowment Fund
Community Industries Corporation, Inc. Fund
Croft Family Fund
Downtown Mural Fund
Edith D. Kraus Charitable Fund
Emergency Fund
Engine 2713 Fund
Green Circle Endowment Fund
Humane Society of Portage County Endowment Fund
Ilten Family Fund (Seed-A-Future)
Keystone Fund
Kids Are Special Here Playground Endowment Fund
Leek Family Fund
Living Trees Memorial Fund
Mary J. Podoll SPASH Band Fund
Meals on Wheels of Stevens Point Fund
Millennium Fund
Myron & Frances Soik Memorial Catholic Assistance Fund

National Wellness Institute Fund
Newman Campus Ministry Endowment
Operation Bootstrap Endowment Fund
Portage County Historical Society Beth Israel Synagogue Fund
Portage County Historical Society Firehouse #2 (Seed-A-Future)
Portage County Historical Society Fund
Portage County Historical Society Heritage Park Fund
Portage County Historical Society Rising Star Mill Fund
Portage County Historical Society Winn Rothman Fund
Portage County Public Library Founders Fund
Portesi Fund for Catholic Education
Schmeeckle Reserve Community Fund (Seed-A-Future)
Sisters of St. Joseph - Third Order of St. Francis Fund
Skyward, Inc. Fund
St. Martin's Church Maintenance Fund
St. Paul's United Methodist Church Angel Endowment Fund
Stevens Point City Band Fund



Reading First Fund



Ethiopian Sustainable Food Project Fund



Wisconsin-Nicaragua Partners of the Americas Fund - UWSP Packing Event

DESIGNATED FUNDS - CONTINUED

Terri Witt Memorial Fund
The Fox on Main, LLC Endowment Fund (Seed-A-Future)
Tooth Fairy Fund
Twin Lakes Public Access Road Fund
Wild Rose Patterson Memorial Library Fund
Wisconsin Woodland Owners Association Fund
Wisconsin/Nicaragua Partners of the Americas Fund
WWI Veteran's Memorial Fund

DONOR ADVISED FUNDS

Amvets Post 1051 Fund (Seed-A-Future)
Andrew & Nancy Lucas Family Fund
Annette & Dale Schuh Riverfront Arts Center Fund
Berens-Scribner American Legion Post 6
Boys & Girls Club of Portage County Endowment Fund
Brian Kranski Memorial Fund
Chester & Viola Biga Memorial Fund
Dale "Doc" Brown Memorial Fund
Dave Marie Family Dominica Educational Fund
David (Skip) and Karen (Przekurat) Karl Fund
Dennis & Linda Brown Family Fund
Dr. Richard B. & Mary Lou Judy Family Fund
Eichmann Family Fund
Fran & Bobbie Roman Family Fund
Frank's Fund
Frederick & Patrice Boehm Family Fund
General Federation of Woman's Club
-Stevens Point Woman's Club Fund
George Rogers Memorial Tomorrow River Fund
Gepetto Fund
Hansen Family Waushara County Fund
Happy Trails Fund
Iola Winter Sports Club Fund
Iola Winter Sports Club Groomer Fund
John Anderson & Judy Cable Anderson Fund
Jury Family Fund
Justiceworks Endowment Fund
Kenneth & Linda Schmidt Family Fund
Kiwanis Club of Wild Rose, Inc. Fund
Koutre Family Fund
Koziol Family Fund
Laabs Family Fund
Lillian Stone Weisberg Native American Fund
Mae Fund
Marcus & Constance Fang Fund
Marvin Wimmer Memorial Fund
Mary Rose & Lawrence Joseph Kedrowski Fund

May Family Fund
Mike Biadasz Farm Safety & Education Memorial Fund
Moerke-Butcher Sense of Place Fund (Seed-A-Future)
Pete Meronek Charitable Fund
Peters Family Fund
Portage County Literacy Council Endowment Fund
Portage County Wildlife Fund
Robert & Ann Shannon Family Fund
Rusek Family Fund
Spoerl Family Memorial Fund
Stevens Point Area Public Schools Education
Enrichment Fund
Stevens Point Junior Woman's Club Fund
Trzebiatowski Endowment Fund (Seed-A-Future)
Vernon and Frieda Rosholt Family Fund
Vince & Mary Fonti Sr. Family Fund
Virgin Spur Fund (Seed-A-Future)
Ward & Ethel Cable Family Fund
William Cherek Charitable Fund
William G. Schierl & Sarena L. Melotte Charitable
Giving Fund

FIELD OF INTEREST FUNDS

The Women's Fund of Portage County

SPECIAL PROJECT/PASS-THROUGH FUNDS

AIR Project Fund
Big Red Club Fund
Bring A Buddy Fund
Cameroon Educational Computer Fund
Central Wisconsin Autism Support Group Fund
Charles "Chuck" Konopacky Memorial Fund
Ciclovía WI Fund
Community Stadium Fund
Conservation of the Little Plover River Fund
Conversations About Care: A Central WI
Community Initiative
Cultural Commons Fund
Culver's Cares Giving Fund
Cycling Without Age Stevens Point
Ethiopian Sustainable Food Project Fund
Friends of 2713 Fund
Friends of Emerson Park
Friends of Standing Rocks Park Fund
Golf in Schools Central Wisconsin
Gus Macker of Stevens Point Fund
Hearing Loops for Public Places Fund
Heartland Leadership Initiative



Friends of 2713 Fund



Stevens Point Junior Woman's Club Fund



Green Circle Endowment Fund

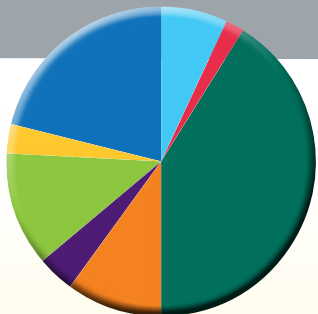
Hungry For More--Growing Fruitful Communities
 JK Lee Black Belt Academy Charitable Fund
 Kiwanis Concert Fund
 Lake Association Buckhorn Emerald Fund
 Makah Water For All Fund
 PJ Jacobs Washington, D.C. Trip Scholarship Fund
 Plover Police Youth & Safety Fund
 Point of Discovery School Fund
 Point in Common Fund
 Portage County Can Fund
 Portage County Curling Center Fund
 Portage County Transition Advisory Council Fund
 Prime Water Anglers Fund
 Reading First Fund
 Salvation Army Milk Fund
 SPASH Debate Alumni Fund
 SPASH Girls Cross Country/Track Panther Prints Fund
 SPASH POMS Fund
 Stevens Point Air Show Fund
 Stevens Point Festival of the Arts
 Stevens Point Area Gymnastics Booster Club
 Stevens Point Sculpture Park Fund
 Stevens Point Skate Park Fund
 Stevens Point Wrestling Booster Club Fund
 Stock the Shelves Fund
 St. Paul Lutheran Church & School
 - Community Outreach
 Suicide Prevention and Mental Health Awareness
 Coalition of Portage County
 Team Schierl Companies Charitable Giving Fund
 Twelve Apostles Musky Club Fund
 UWSP Diving Team Fund
 Veteran's Memorial Restoration Fund
 Waushara County Animal Shelter Fund
 Wisconsin League of Musky Anglers Fund

SCHOLARSHIP FUNDS

Achievement Center Huettig Memorial Fund
 Adam Okray Memorial Scholarship Fund
 (Seed-A-Future)
 Alton & Barbara McDonald Scholarship
 Angie Sheldon Memorial Fund
 Ann G. Haley Scholarship Fund
 Avis M. Wysocki Memorial Scholarship
 Barbara J. Gagas Memorial Scholarship Fund
 Barlow Enterprises Inc., Charitable and
 Educational Fund
 Bennett C. Katz Scholarship Fund
 Bev Laska Scholarship Fund (Seed-A-Future)
 Bunczak Family Scholarship
 Charles A. Anderson Memorial Scholarship Fund
 Cheri Smith Scholarship Fund
 COLLEGE Scholarship Fund
 Community First Bank Scholarship Fund
 Cook Family Scholarship Fund
 Dan Zurawski Memorial Scholarship Fund
 Debbie Callahan Arts Fund
 Delta Dental Service Scholarship
 Dennis Bonikowske "Write-Right" Scholarship
 Dirk Sorenson - Dave Amdahl Wrestling Scholarship
 Don Hamerski Memorial Scholarship Fund
 Donn Behnke Scholarship Fund
 Edna B. Collins Scholarship Fund
 Elizabeth C. Davies Scholarship Fund
 Elmer Fournier Memorial Scholarship Fund
 Family & Consumer Sciences Fund
 Fat Boy Golf Scholarship Fund
 Fern M. Johnson Nursing Scholarship Fund
 Friends of 90FM Fund
 Friends of Education Scholarship Fund
 George Roman Baseball Scholarship Fund

Golden Sands Home Builders Scholarship Fund
 Greg Chelcun Memorial Scholarship Fund
 Heidi Evenson Memorial Scholarship Fund
 Henry Flees-Scott Eiden Memorial Scholarship Fund
 Iber Health Education Scholarship Fund
 Inwald & Anna Songe Scholarship Fund
 Irene E. Kubisiak Scholarship Fund
 James R. Cherney Scholarship Fund
 Jeffrey Badura Memorial Scholarship Fund
 Jerry Apps Scholarship Fund
 Jill & John Norton Scholarship Fund
 Jim Kocha Memorial Scholarship Fund
 Joey Trzebiatowski Memorial Scholarship Fund
 John R. Jones Scholarship Fund
 John Wandrey Memorial Scholarship Fund
 Jon Vollandorf Girls Basketball Scholarship Fund
 Judge Robert Jenkins Memorial Fund
 Ken & Helen Scheidt Memorial Scholarship Fund
 Klismith Family Fund
 Laura Davies Memorial Scholarship Fund
 LauraLee & Brian K. Johnson Fine Arts Award Fund
 LeRoy & Phyllis Heiser Basketball Scholarship Fund
 Lois & Margaret Walters Scholarship
 MADA Custom Apparel Scholarship Fund
 Malcolm & Margaret Rosholt Scholarship Fund
 Marie Colrud Gunther Memorial Scholarship Fund
 Mark Acaley Memorial Scholarship Fund
 Martha Jones Scholarship Fund
 Mary Humphrey Scholarship Fund
 Mary Thurmaier Foreign Language Scholarship Fund
 Mike Olson Cross Country Scholarship Fund
 Murty Trust Scholarship Fund
 Music Department Scholarship Fund
 Norman & Margaret Myhra Scholarship Fund
 North New Hope Lutheran Church Fund

Peter C. Zimmerman Memorial Scholarship Fund
 Peter Friedrich Memorial Fund
 Plover Whiting Youth Athletics Scholarship
 Point Bock Run Scholarship
 Richard & Myrna Schneider Family Fund
 (Schneider Family Fund)
 Richard Lee Biga II Memorial Fund
 Rosholt Clinic Scholarship
 Rosholt Education Foundation General Fund
 Rosholt Lions & Sandy Becker Memorial
 Scholarship Fund
 Russell Phillips Scholarship Fund
 Ruth Nelson Memorial Scholarship Fund
 Ryan Wanta Memorial Fund
 Sadie C. Uihlein Scholarship Fund
 Sammy Jo Kurdydyk Memorial Scholarship Fund
 Schwartz Family Scholarship Fund
 Science Department Award Fund
 Scott Schultz Memorial Fund
 Shantytown Snowmobile Club Technical School
 Scholarship Fund
 Shaw Family Natural Resources Fund
 Sheila Kockeler Scholarship Fund
 SPASH Girls Soccer Club Scholarship Fund
 Steffen Family Scholarship Fund (Seed-A-Future)
 Stevens Point Area Education Association Fund
 Stevens Point Area Retired Teachers Association
 Scholarship Fund
 Stevens Point Rotary Club Fund
 Susan M. Zywicki Memorial Scholarship Fund
 Tim Turner Scholarship Fund
 Vernon & Frieda Rosholt Memorial Scholarship Fund
 Vernon Grosenick Scholarship Fund
 William Cherek Scholarship Fund
 Win & Nora Jensen Scholarship Fund



ASSETS by TYPE of FUND

- Agency
7%
- Admin/Operating
2%
- Designated Funds
41%
- Donor Advised Funds
10%
- Field of Interest Fund
4%
- Mission Funds
12%
- Project/Pass-thru
3%
- Scholarships
21%

*Together, we work to ensure
your generosity makes an impact
now and for future generations.*

Financials audited by CliftonLarsonAllen LLP, Certified Public Accountants and Consultants. Audited financial statements and the 990 tax form are available upon request from the Community Foundation office. The Community Foundation is not required to submit a 990T at this time, but in the event the Community Foundation is required to submit this form, it would also be available upon request.

STATEMENT OF FINANCIAL POSITION

The Community Foundation of Central Wisconsin holds itself to high standards of financial management and transparency. Your charitable gifts are managed by trusted professionals on our staff and Board of Directors.

Total assets managed (including assets managed for others) for fiscal year ending June 30, 2019.

ASSETS

Cash and cash equivalents	748,176
Cash and cash equivalents held for investment purposes	158,153
Investments	22,505,700
Other Assets	87,181
Total Assets	23,499,210

LIABILITIES AND NET ASSETS

Accounts Payable	16,916
Accrued Expenses	5,881
Grants Payable	218,784
Funds held for others	1,505,156
Without Donor Restrictions	354,164
With Donor Restrictions	21,398,309
Total Liabilities and Net Assets	23,499,210

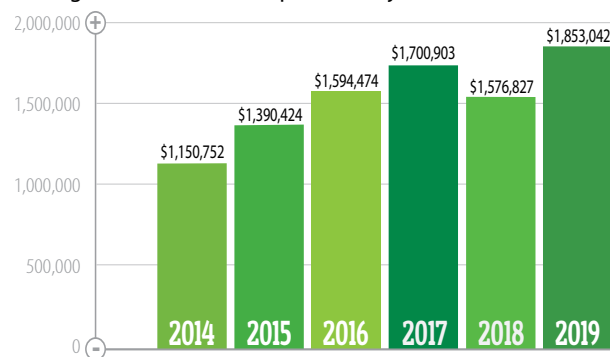
REVENUE, GAINS & OTHER SUPPORT

Contributions	1,643,570
Investment Income	742,740
Other income	4,120
Total Revenue, Gains & other support	2,390,430

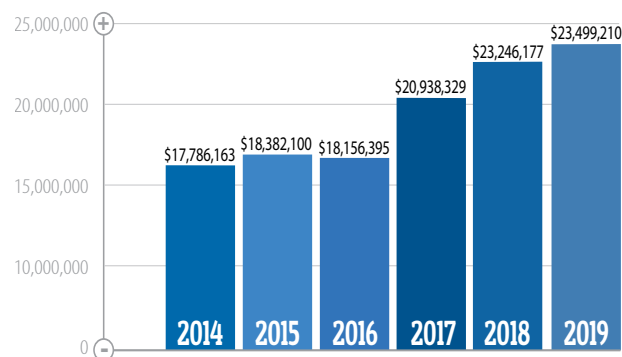
EXPENSES

Grants, Scholarships and Program Services	1,853,042
General and Administrative	142,010
Fund Raising	94,463
Total Expenses	2,089,515
Change in Net Assets	300,915

GIVING BACK TO THE COMMUNITY through Grants, Scholarships, and Projects



TOTAL ASSETS



2019 BOARD OF DIRECTORS



Trish Baker
President



Jim Robinson
President Elect



Sue Shulfer
Vice President



Michael Lauterbach
Secretary



Justin Regnier
Treasurer



Rick Flugaur
Past President



Jim Canales



Dawn Cherek



Christopher Cox



Michele Dufresne



Jami Gebert



Jerry King



Dan Kinsella



Jennifer Koepl



Joan Laabs



Katy Olson



Tiffany Praeger



Max Trzebiatowski



Are Vang



Dave Williams



Katie Young



Sheryl O'Connell



Mark Scheunemann



Jeremy Solin

2020 NEW BOARD MEMBERS

COMMUNITY FOUNDATION TEAM



Erin Andrews
Executive Director
erin@cfcw.org



Trisha Ballweg
Accounting
trisha@cfcw.org



Marlee Bokhoven
Grants & Scholarships
marlee@cfcw.org



Jessica Hoerter
Communications
jessica@cfcw.org



Karen Wolf
Operations
karen@cfcw.org

2019 COMMITTEES

Emeritus Board of Directors Members

Marg Coker-Nelson
Mary Croft (In Memoriam)
Helen Godfrey (In Memoriam)
Betty Iber (In Memoriam)
Mark Ilten
Edie Kraus (In Memoriam)
Mark Makhholm (In Memoriam)
Gil Oelke (In Memoriam)
George Rogers (In Memoriam)
Anne Schierl (In Memoriam)
Bob Worth
David Worth

Executive Committee

Trish Baker
Jim Robinson
Sue Shulfer
Michael Lauterbach
Justin Regnier
Rick Flugaur

Grants Committee

Katy Olson, Co-Chair
Michael Lauterbach, Co-Chair
Chris Cox
Dan Kinsella
Mae Nachman
Abi Solin
Gretchen Steinmetz
Are Vang

Wauhsara Grants (Hartford Fund)

Dave Williams
Jennifer Koepl
Pat Diercks
Becky Horvath
A.J. McCaskey

Scholarship Committee

Dawn Cherek, Co-Chair
Michele Dufresne, Co-Chair
Amanda Arens
Peter Bernhagen
Lindsay Bernhagen
Dan Kontos
Larry Oathout
Tiffany Praeger
Wendy Robinson
Sue Shulfer
Steven Thompson
Gail Viergutz
Jessica Wiesman

Finance Committee

Justin Regnier, Chair
Trish Baker
William Cherek
Stacey Donovan
Michele Dufresne
Rick Flugaur
Jennifer Koepl
Jim Robinson
Dave Williams
Max Trzebiatowski
Katie Young

Marketing Committee

Jim Robinson, Chair
Amanda Bittorf
Jim Canales
Eva Donohoo
Jerry King
Joan Laabs
Casey Zempel





1501 Clark Street, Stevens Point, WI 54481

OUR MISSION

To help make the counties of Portage and Waushara better places to grow, to work, to play and to retire - by helping people, enhancing education, enriching arts and culture, contributing to wellness and improving the environment through financial management of gifts and grants from individuals and organizations.

The Community Foundation of Central Wisconsin is committed to being a philanthropic partner with you. Let us know how we can help.

CONNECT WITH US

www.cfcwi.org

foundation@cfcwi.org

715-342-4454



**Find us on
Facebook!**



Excellence. Accountability. Impact.™

Confirmed in compliance
with National Standards for
U.S. Community Foundations